

**56TH STREET NORTH LAND
800 EAST 56TH STREET NORTH
SIOUX FALLS, SD**

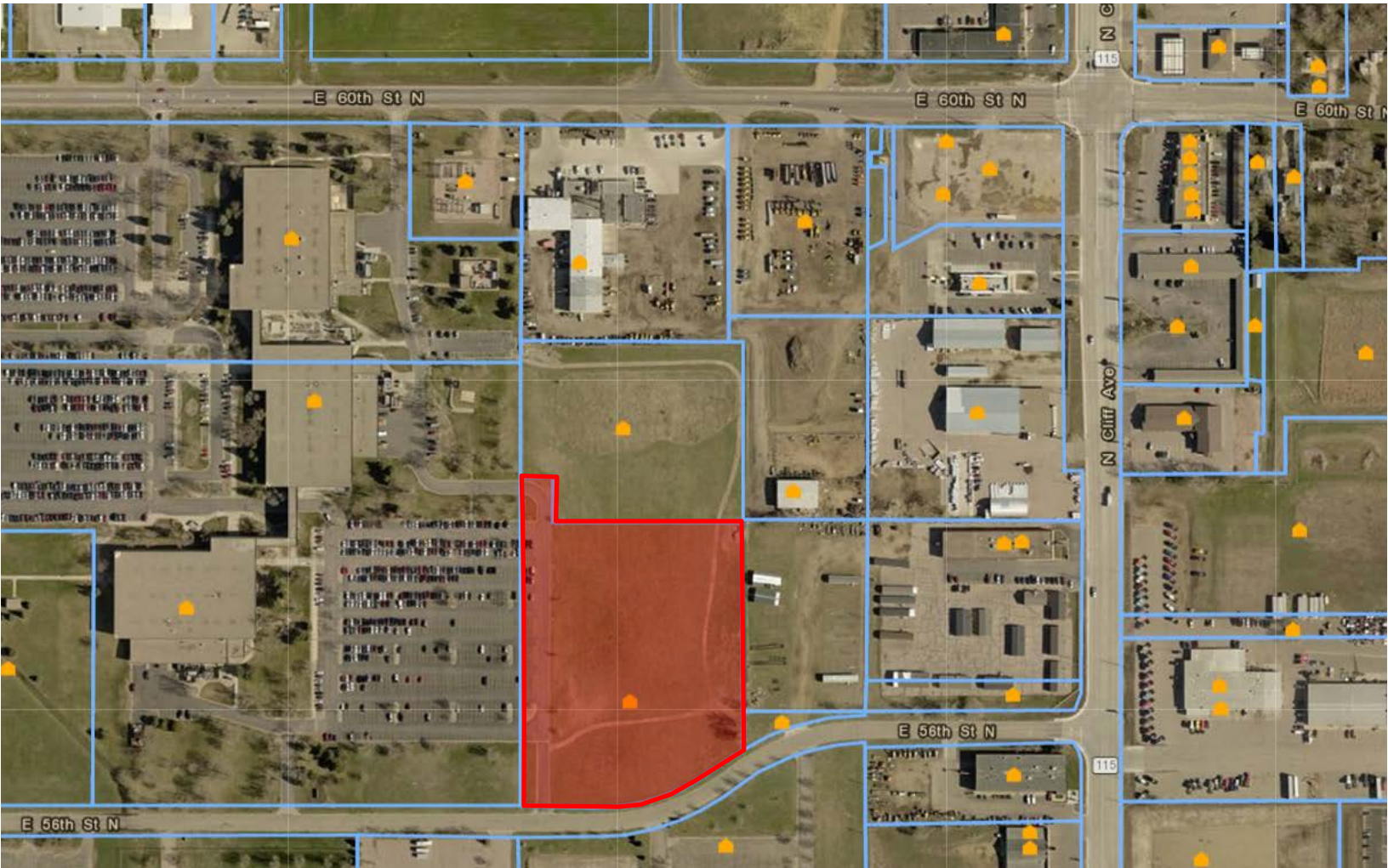
Real Estate Services

Bender
COMMERCIAL

FOR SALE

INDUSTRIAL/OFFICE LAND – NORTHEAST SIOUX FALLS

We open doors.



PROPERTY FEATURES:

- 304,155 sq. ft. (6.98 acres)
- For Sale: \$3.00/sq. ft.
- Zoned I-1 Light Industrial.
- Industrial/commercial land with frontage along East 56th Street North near Cliff Avenue.
- Easy access to 4th Avenue and Cliff Avenue.
- Located in Sioux Empire Development Park II, an established industrial/office park in northeast Sioux Falls.

For More Information, Please Contact:

ANDI ANDERSON, SIOR
andi@benderco.com
(605) 782-1660



56TH STREET NORTH LAND
800 EAST 56TH STREET NORTH
SIOUX FALLS, SD

Real Estate Services

Bender
COMMERCIAL

We open doors.

