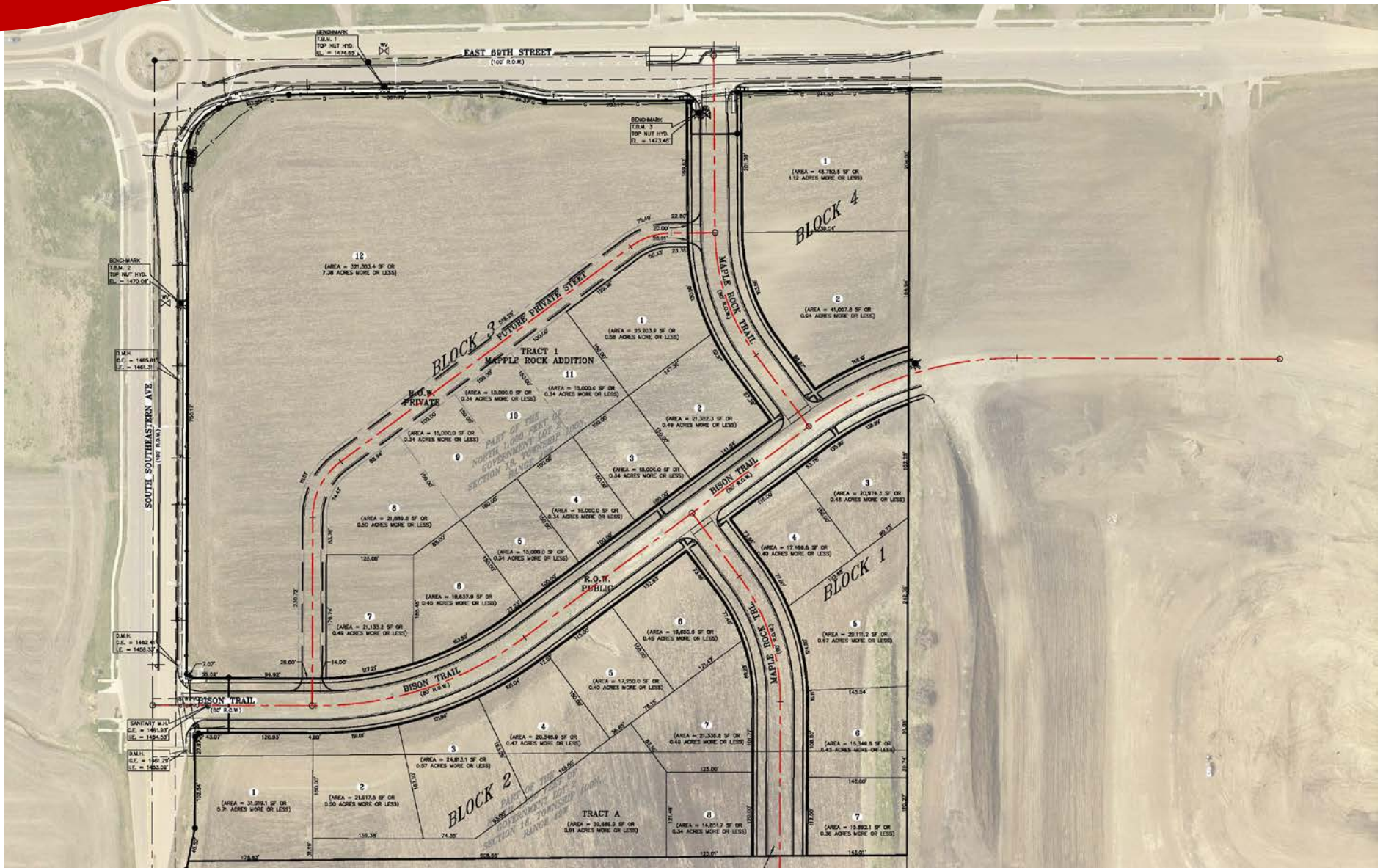


**FOR SALE:  
COMMERCIAL LAND  
SIOUX FALLS, SD**

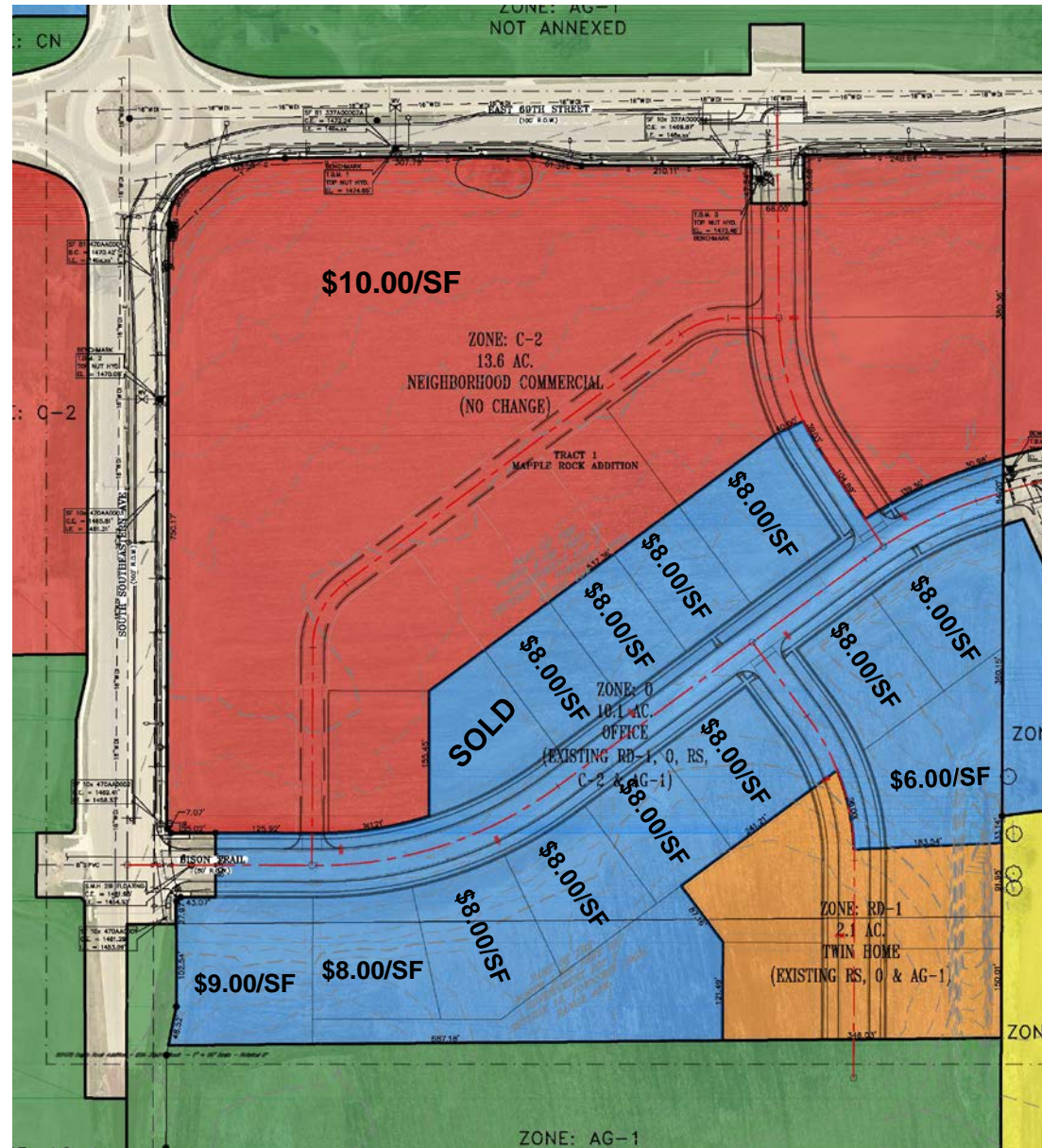
**6200 SOUTH SOUTHEASTERN AVENUE  
SIOUX FALLS, SD  
Various Size/Prices**



Reggie Kuipers, SIOR  
Bender Commercial Real Estate Services  
122 South Phillips Avenue, Suite 350, Sioux Falls, SD  
reggie@benderco.com  
(605) 336-7600

**Bender**  
COMMERCIAL

PROPERTY OVERVIEW	
Space Size:	Lots available from 0.34 to 7.38 acres
Sale Price:	\$8.00 - \$10.00/sq. ft.
Zoning:	See zoning map; C-2 Commercial, LW Live-Work
Comments:	
<ul style="list-style-type: none"> <li>Commercial land located on the southeast corner of 69<sup>th</sup> Street and Southeastern Avenue.</li> <li>Various lot sizes available.</li> <li>C-2 Commercial Lots: 13.6 acres Lots ranging from 15,000 sq. ft. to 7.38 acres</li> <li>Office: 10.1 acres Lot ranging from 0.34 acres to 0.71 acres</li> <li>Access into development via 69<sup>th</sup> Street and Southeastern Avenue.</li> <li>Easy access to proposed SD 100.</li> <li>Perfect for small owner-occupied office users.</li> <li>Choose your own builder.</li> <li>Covenants and Restrictions apply – contact broker for details.</li> </ul>	

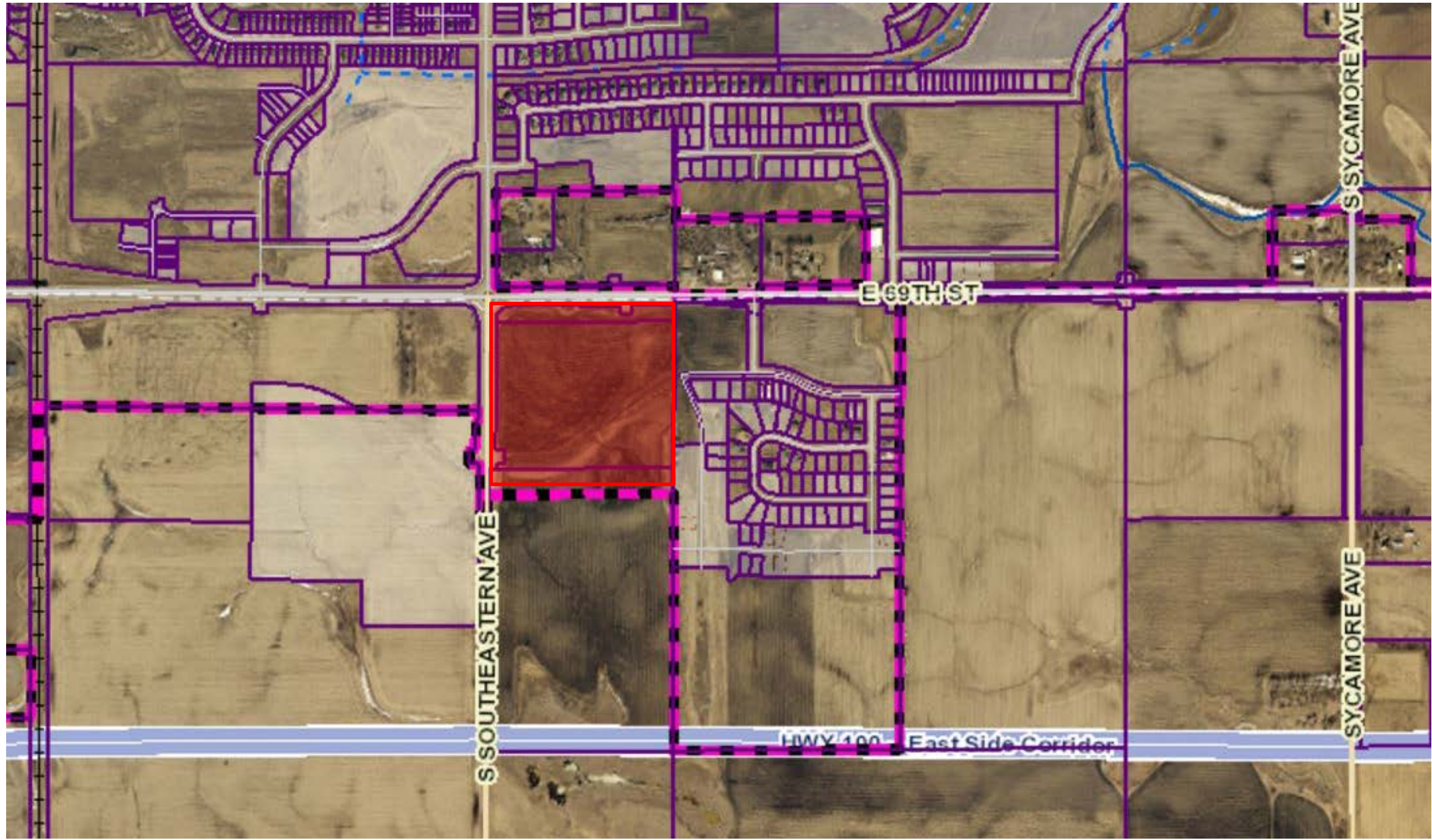


**COMMERCIAL LAND  
SIOUX FALLS, SD**



Reggie Kuipers, SIOR  
Bender Commercial Real Estate Services  
122 South Phillips Avenue, Suite 350, Sioux Falls, SD  
reggie@benderco.com  
(605) 336-7600

**Bender**  
COMMERCIAL



Reggie Kuipers, SIOR  
Bender Commercial Real Estate Services  
122 South Phillips Avenue, Suite 350, Sioux Falls, SD  
reggie@benderco.com  
(605) 336-7600